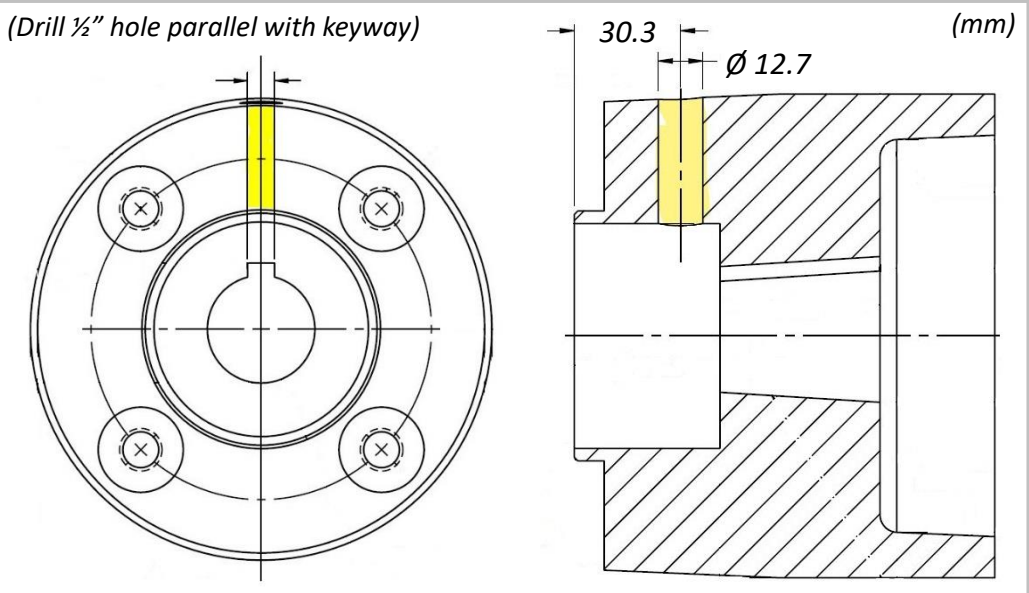
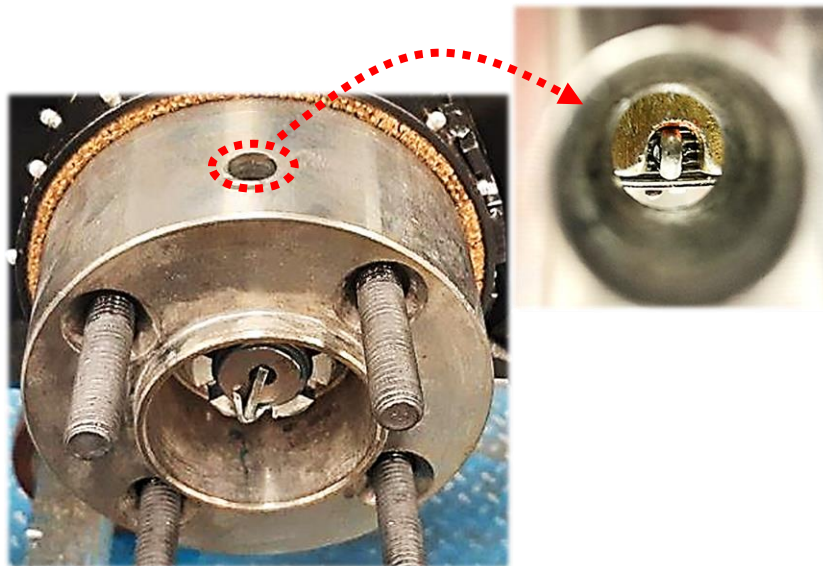


WBH-16EF BRAKE HUB RETAINING NUT PRODUCTION CHANGE

This document is to inform of a production change regarding the brake hub retaining nut where now a castle nut is used and a cotter pin is added. Buggies built between s/n 1P02 February 2023 ~ s/n 1P12 December 2023 have brake hub nuts not secured with cotter pins, the nuts are torqued to 380 ft. lbs. secured with blue Loctite.

Effective s/n R0191 January 2024, the brake hub p/n 809428 was modified with the addition of a 1/2" hole (12.7mm) to accommodate the installation of a cotter pin. On previously built machines, cotter pins can be added by drilling a 1/2" hole into the brake hub as noted on the following illustration. Nuts will continue to be torqued to 380 ft. lbs. and secured with blue Loctite.



The information and specifications included in this publication were in effect at the time of approval for printing. Illustrations, descriptions, references and technical data contained in this document are for guidance only and may not be considered as binding. Multiquip Inc. reserves the right to discontinue or change specifications, design or the information published in this publication at any time without notice and without incurring any obligations.