



**Service Bulletin No. CB20050725**  
**Subject: Foam Filled Wheels**  
**Model: WBH-16**  
**Product Group: CB**  
**Date: 07/25/2005**

**SERVICE BULLETIN** **Group:**

- Mandatory**     
  **Information**     
  **Recommended Change**

**Series/Parts Affected: WBH-16**

**Machines Affected:**  
**January 2005 and after**

**SERVICE INFORMATION**

It has been discovered that all WBH-16 power buggies manufactured since January 2005 may have had their tires improperly installed after the foam filled process.

**INSTALLATION INSTRUCTIONS**

The following instructions outline the procedure for mounting the drive tire assembly onto the drive hub.

1. Remove the cotter pin (item 1), from the drive-hub 1-1/8" retaining nut (item 2). Using a torque wrench, check the tightness of the retaining nut. It should be 200 ft-lbs. Re-torque retaining nut if necessary.
2. Make sure the 1/2-inch studs (qty. 4), item 3 are securely tightened into the drive hub using Loctite 271™ (item 4).
3. Mount the "CHAMFER" side of the inner tire/rim (item 5) onto the "CHAMFER" side of the drive hub.
4. Install flange hub (item 6) onto studs.
5. Install the 1/2x13 retaining nuts (qty. 4), item 7 onto the studs. Tighten to **85 ft-lbs** using the tighten sequence illustrated in Figure 1B.
6. Mount the outer tire/rim onto the flange hub with the "CHAMFER" side of the rim facing outward (item 8).
7. Install the 1/2x20 retaining cone nuts (qty. 4), item 9 onto the studs. Tighten to **65 ft-lbs** using the tighten sequence illustrated in Figure 1B.

**PARTS INFORMATION**

Quantity	Part #	Description	Remarks

# WARRANTY INFORMATION

## Campaign Reference No. 20050725

Please contact Chris Fairchild or George Manrique @ 1-800-421-1244 for warranty claim number and warranty form.

**Labor Allowance: Flat Rate to install – 45 minutes.**

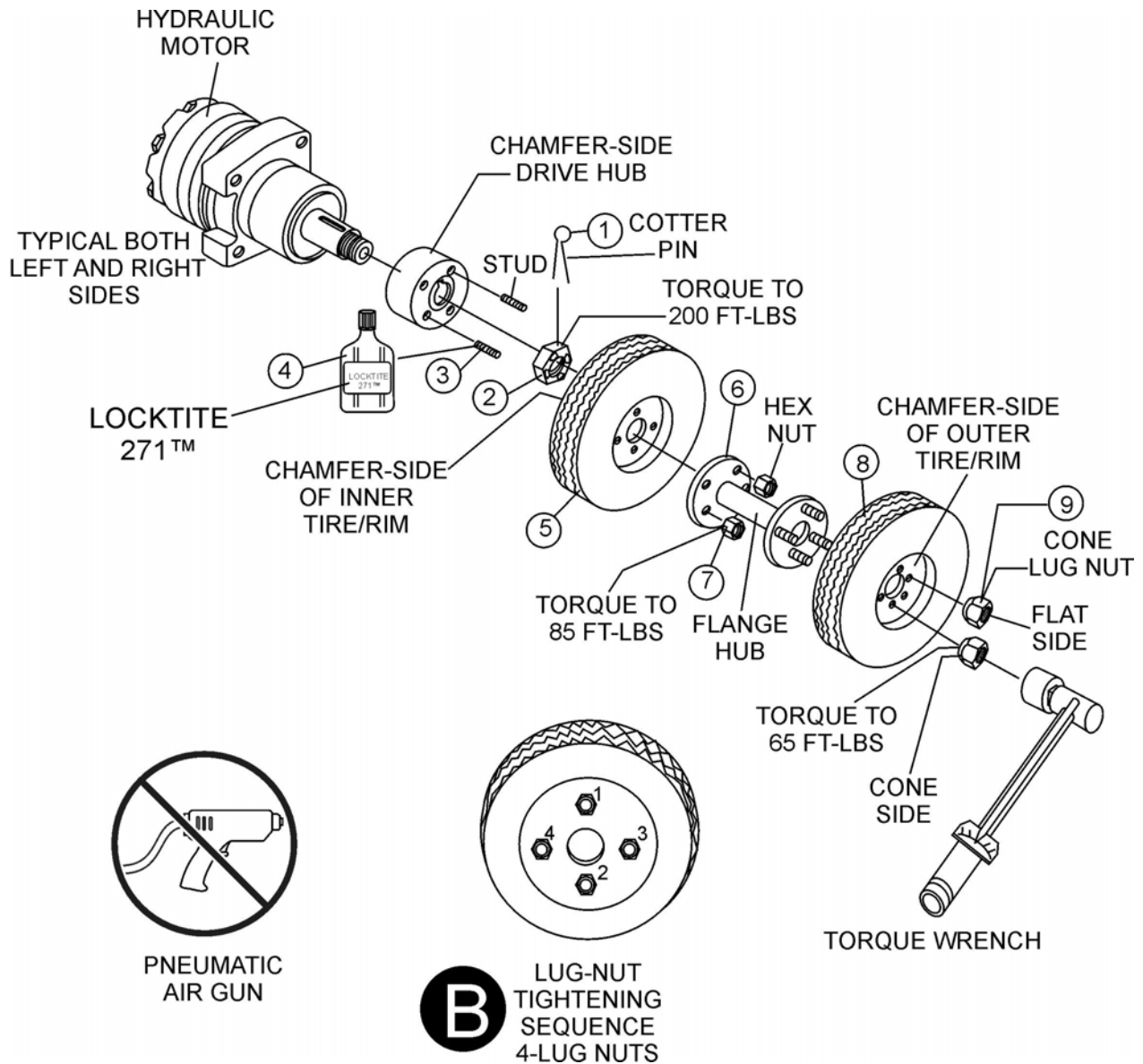


Figure 1 WBH-16 Rim/Tire Mounting Procedure