



This bulletin is provided for technical reference and service related updates. If you have any questions, comments or do not wish to receive these e-mails, please reply to this e-mail or call the Service Technical Support Group 800 478-1244.

HYDRAULIC PRESSURE TEST



WARNING: The following should only be done by qualified experienced service technicians. For your safety and the safety of others carefully read, understand and observe all instructions.

HYDRAULIC CONTROL VALVE LOCATION



CONTROL VALVE ASSEMBLY



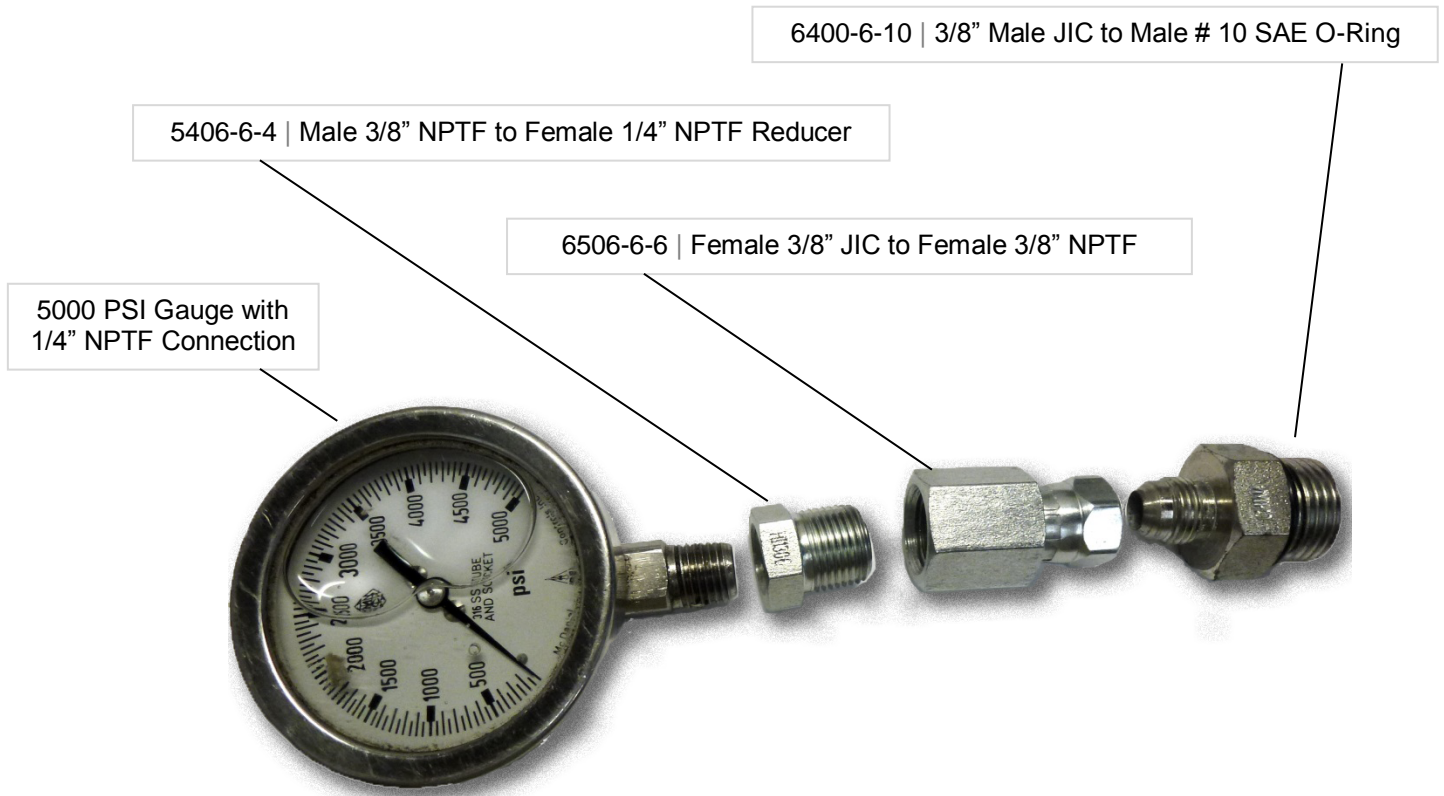
- ← Dump Drive Lever
- ← Paddle Rotation Lever
- ← Relief Valve



This bulletin is provided for technical reference and service related updates. If you have any questions, comments or do not wish to receive these e-mails, please reply to this e-mail or call the Service Technical Support Group 800 478-1244.

PRESSURE GAUGE

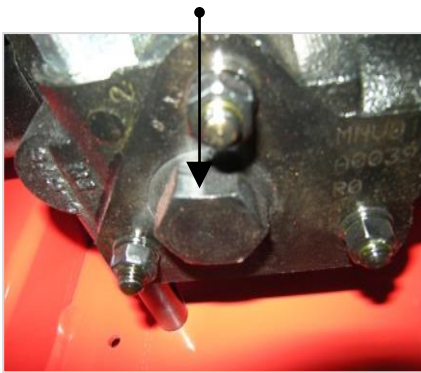
A pressure gauge is required to inspect the hydraulic pressure reading. The following fittings can be used to inspect hydraulic system pressures. The part numbers are universal and can be obtained from any industry hydraulic fitting supplier.



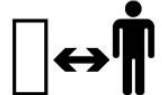
PADDLE ROTATION PRESSURE

IMPORTANT: Prior to testing any of the hydraulic system, ensure the engine is running at 3600 RPM and the hydraulic oil is at operating temperature.

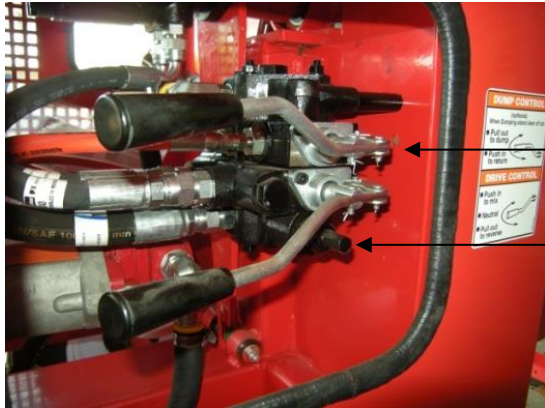
- Position mixer on flat surface.
- Remove the bolt on the bottom of the hydraulic control valve and install a 5000 PSI hydraulic gauge. Use a 1 inch socket to remove bolt. Use an oil pan or shop rags, oil will seep out.



- Use a large steel pry bar (crowbar lever, or mechanic wrecking bar) to lock the paddle arms inside the mixer tub.
- During test keep safe distance and wear all necessary protective gear
- Start engine, set to full 3600 RPM
- Slowly activate the paddle drive lever to rest paddle arm on the pry bar, locking the paddle arms in place.
- While paddle arms are locked in place, hold the paddle drive lever for about 3-5 seconds to register pressure relief reading on the gauge maximum 1750 PSI.



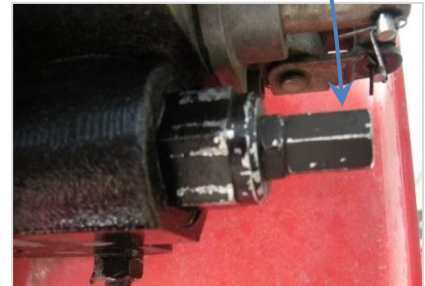
RELIEF VALVE ADJUSTMENT



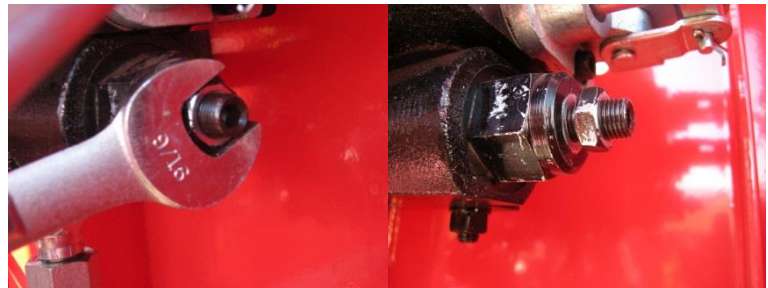
• *Hydraulic Specification* • 1750 PSI •

Dump Drive Lever

Relief Valve



- Remove the relief valve cap with a ½ in. wrench.
- Loosen lock nut with 9/16 wrench
- Using an Allen wrench, turn the relief valve stud clockwise to decrease pressure.
- Using an Allen wrench, turn the relief valve stud counter-clockwise to increase pressure.
- When finished retighten lock nut.



IMPORTANT: The hydraulic motor is protected with an integral relief valve. The relief valve is pre-set at the factory to 1750 PSI and does not need to be adjusted.