



Water Trailer Series

WT5 Series Hitch Mount Brace Installation

The following instructions are intended to assist the user in the installation of the Hitch Mount Brace on the WT5C, WTE5C, WT5CSG water trailers. Please read all assembly instructions before installing.

REQUIRED TOOLS

- Welder
- Bar-Clamp
- Approved Respirator
- Welding Face Shield
- Safety Glasses
- Gloves
- Hard Hat
- Grinder
- Black Glossy Paint

PARTS

Verify that all parts are accounted for. See Figure 1 and Table 1.

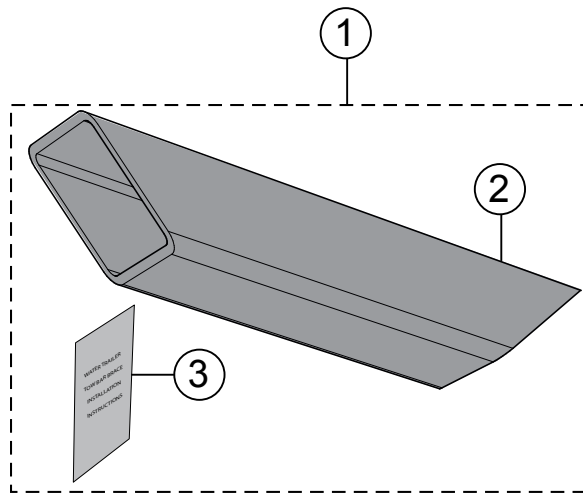


Figure 1. Brace Kit, Tow Bar

Table 1. WT5 Series Hitch Mount Brace Kit

Item No.	Part No.	Description	QTY.	Remarks
1	59182-SK	Brace Kit, Tow Bar	1	Includes items 2-3
2	59182	Brace, Hitch Mount	1	
3	59183	Instruction Sheet, WT5 Series SB	1	

SAFETY

NOTICE

Only use a **certified welder** with proper training who is qualified to perform this installation. Follow all shop safety rules when performing this installation.

- Perform all work in an area that is well ventilated to prevent inhalation of dust and toxic fumes.
- **DO NOT** use chlorinated solvents in areas where welding will take place.
- **ALWAYS** properly dispose of paint and solvents.

PREPARATION

1. Check that the hitch mount brace is accounted for before attempting this installation procedure. Reference Table 1 and Figure 1.
2. Place the water trailer in an area free of dirt and debris. Make sure it is on secure level ground with chock blocks underneath each wheel to prevent the trailer from rolling.

DECAL REMOVAL

NOTICE

Due to **excessive heat** during welding, the possibility exist that the **VIN** and **tire pressure** decals may become damaged during the welding process.

NOTICE

Record the **entire** Vehicle Identification Number (**VIN**) displayed on the decal before removing decal.

Replacement VIN and tire pressure decals will only be sent after a claim has been filed with the MQ Warranty Dept.

1. Record the entire VIN identification number displayed on the VIN decal. Also **record** the last **five** digits of the VIN number that is stamped into the trailer frame (Figure 2).

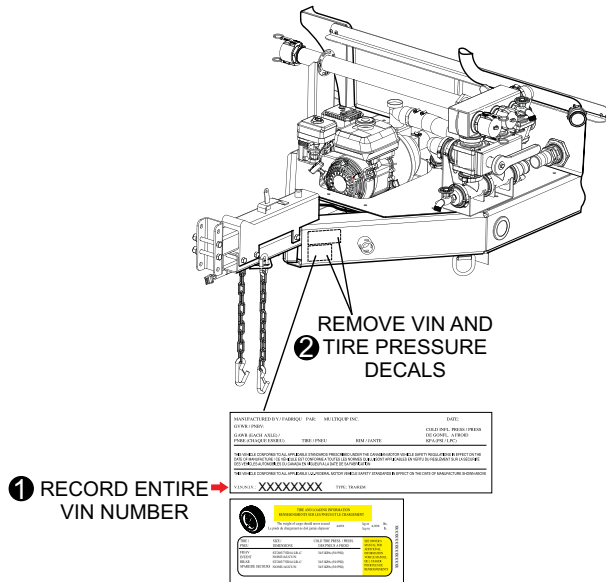


Figure 2. VIN/Tire Pressure Decal Removal

2. Remove the VIN and tire pressure decals as shown in Figure 2.

ROCEDURE

1. Using a grinder (Figure 3), **remove paint** from area to be heated during welding.

NOTICE

Failure to properly remove the Powder Coat prior to welding may cause **excessive porosity** in the welds.

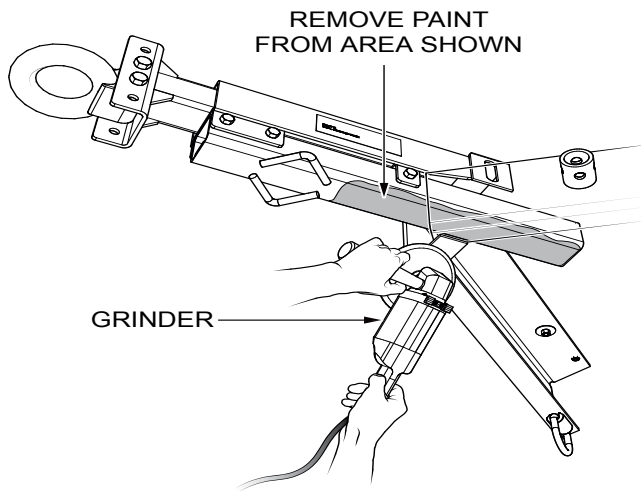


Figure 3. Paint Removal

CAUTION

If the paint cannot be removed, wear an approved respirator before heating or welding to prevent inhalation of hazardous material.

2. Locate the A-frame cavity area (Figure 4) under the tongue side on the trailer frame.
3. Next, slide hitch mount brace (P/N 59182) into the cavity area on the trailer frame as shown in Figure 4.

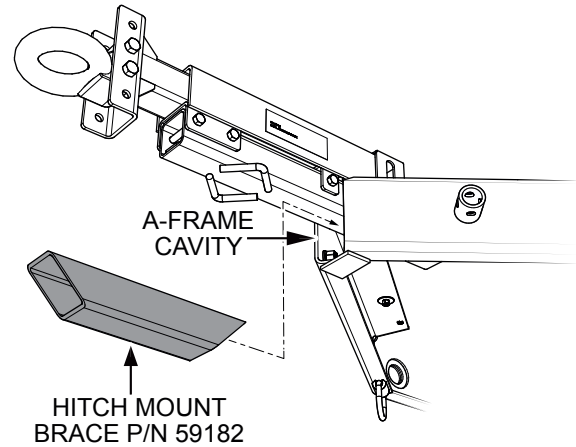


Figure 4. Inserting Hitch Mount Brace

4. Position the brace so that 7/16" clearance exists between the trailer frame and the rear section of the brace as shown in Figure 5.

NOTICE

You may experience that the Hitch Mount Brace will not easily fit inside the A-Frame Cavity prior to the welding operations. Overtime, the build-up of materials inside the cavity may require you to clean and/or grind out the unwanted materials.

Further, you may be caused to do slight grinding of the Hitch Mount Brace to allow it to slide into place within the A-Frame cavity.

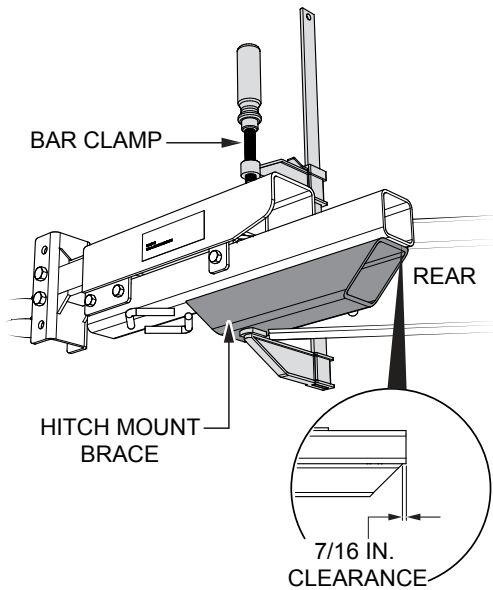


Figure 5. Hitch Mount Brace Placement

- Once the hitch mount brace has been correctly positioned, secure brace in place with bar clamp as shown in Figure 5.

WELDING

- Weld hitch mount brace (Figure 6) onto trailer frame.

NOTICE

When performing longitudinal welds on hitch mount brace, apply 2" welds on 4" centers minimum.

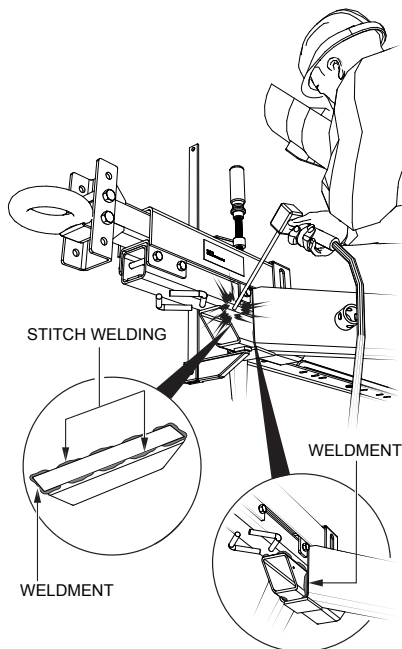


Figure 6. Welding Hitch Mount Brace

- At the completion of the welding process, remove any flux, burrs or rough edges from the welding area.

PAINTING

NOTICE

Let welded area cool before painting.

- Clean all welding areas on the trailer frame with a wire brush, then paint area with **black glossy spray paint** (Figure 7).

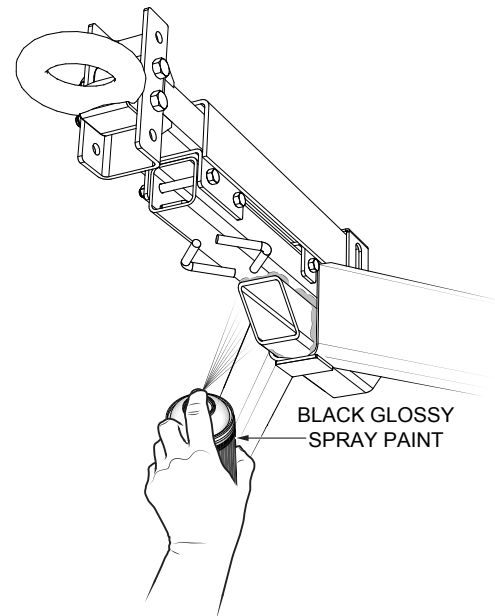


Figure 7. Painting Welding Area

VIN AND TIRE PRESSURE DECAL PLACEMENT

NOTICE

The steps below cannot be completed until your warranty claim has been processed. Once your claim has been processed and your VIN number verified, replacement VIN and tire pressure decals will be sent to you.

1. Compare your new replacement VIN decal identification number with the number that was recorded earlier.
2. If the numbers match proceed to step 3. If the numbers **DO NOT** match, contact the MQ Warranty Department.
3. Clean the decal surface with isopropyl alcohol prior to decal placement.
4. Place the replacement VIN and tire pressure decals as shown in Figure 8.

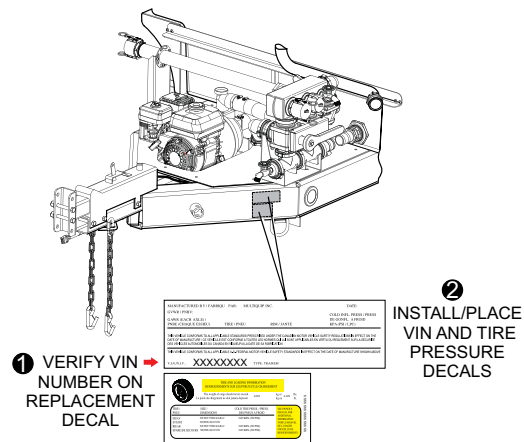


Figure 8. VIN/Tire Pressure Decals (Placement)



Water Trailer Series

WT5 Series Hitch Mount Brace Installation

HERE'S HOW TO GET HELP

PLEASE HAVE THE MODEL AND SERIAL
NUMBER ON-HAND WHEN CALLING

UNITED STATES

Multiquip Corporate Office

18910 Wilmington Ave. Tel. (800) 421-1244
Carson, CA 90746 Fax (310) 537-3927
Contact: mq@multiquip.com

Service Department

800-421-1244
310-537-3700

Technical Assistance

800-478-1244 Fax: 310-943-2238

MQ Parts Department

800-427-1244 Fax: 800-672-7877
310-537-3700

Warranty Department

800-421-1244 Fax: 310-943-2249
310-537-3700

CANADA

Multiquip

4110 Industriel Boul.
Laval, Quebec, Canada H7L 6V3
Contact: infocanda@multiquip.com

Tel: (450) 625-2244
Tel: (877) 963-4411
Fax: (450) 625-8664

UNITED KINGDOM

Multiquip (UK) Limited Head Office

Unit 2, Northpoint Industrial Estate, Tel: 0161 339 2223
Globe Lane, Fax: 0161 339 3226
Dukinfield, Cheshire SK16 4UJ
Contact: sales@multiquip.co.uk

© COPYRIGHT 2017, MULTIQUIP INC.

Multiquip Inc and the MQ logo are registered trademarks of Multiquip Inc. and may not be used, reproduced, or altered without written permission. All other trademarks are the property of their respective owners and used with permission.

The information and specifications included in this publication were in effect at the time of approval for printing. Illustrations, descriptions, references and technical data contained in this document are for guidance only and may not be considered as binding. Multiquip Inc. reserves the right to discontinue or change specifications, design or the information published in this publication at any time without notice and without incurring any obligations.

Your Local Dealer is:

