



**Service Bulletin No.** CO20080307  
**Subject:** Instaprime Retrofit Kit  
**Models:** MP150SDLTS, MP150SDLTE MP200DLTS  
 MP200SDLTE, MP200SDLTS MP200DLTE  
**Product Group:** Pumps  
**Date:** March 07, 2008

**SERVICE BULLETIN**

**Group: CO**

**Mandatory**
                 
  **Information**
                 
  **Recommended Change**

**Series/Parts Affected:**

ALL

**Machines Affected:**

**Model.....Serial number Range**

- MP150SDLTS .....S/N ZE1700007, S/N ZE1700008 and S/N ZH1700022
- MP150SDLTE .....S/N ZH1700020
- MP200DLTS .....S/N ZB1700010
- MP200SDLTS .....S/N ZF1700012, S/N ZF1700013 and S/N ZH1700021
- MP200DLTE .....S/N ZG1700017
- MP200SDLTE .....S/N ZA1700002, S/N ZD1700003 and S/N ZG1700016

**SERVICE INFORMATION**

**MANDATORY UPDATE:** For the above referenced serial numbers the Instaprime pump retrofit kit is provided as an improvement to all existing Instaprime pumps.

<b>PARTS INFORMATION</b>			
Quantity	Part #	Description	Remarks
1	17432	Instaprime Retrofit Kit	

**WORK SAFELY!**

Only a qualified service technician with proper training should perform this installation.

**Required Tools/Materials**

- 3/4" Combination Wrench or Adjustable Wrench
- 19 mm End Wrench
- 13 mm Socket
- 3/8-Inch Ratchet
- Rubber Mallet
- Torque Wrench

Please make sure all Instaprime Retrofit Kit parts are accounted for. See Table 1.

<b>Item No.</b>	<b>Part No.</b>	<b>Description</b>	<b>Qty.</b>	<b>Remarks</b>
1	17432	<b>Instaprime Retrofit Kit</b>	1	Includes items 2, 6 and 9
2	17425	<b>Kit, Retrofit Float Valve</b>	1	Includes items 3, 4 and 5
3	17122	Float Valve Assy.	1	
4	17099	Screw, HHC M12-1.75 X 20	4	
5	17039	Gasket, Priming Tank, Float Valve	1	
6	17427	<b>Kit, Retrofit Vacuum Pump Cover</b>	1	Includes items 7 and 8
7	17431	Vacuum Pump Cover Assy.	1	
8	17143	O-Ring, Size 2-271 Viton	2	
9	17429	<b>Kit, Decals</b>	1	Includes items 10,11 12 and 13
10	17399	Decal, Priming System Drain	1	
11	17398	Decal, Priming System	1	
12	17397	Decal, Hot Surface	1	
13	17394	Decal, Priming System Fill Level	1	

## Safety Procedures

Perform the following before attempting installation of the Instaprime Retrofit Kit:

1. Following all safety shop rules and regulations when performing this installation.
2. Place the machine on level secure ground that is free of dirt and debris.
3. Chock wheels to prevent rolling.

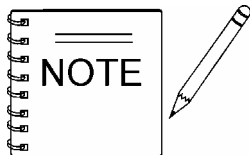
## FLOAT VALVE REPLACEMENT INSTRUCTIONS

### Removal of existing Float Valve and Gasket.

1. Make sure priming tank is empty (no water)
2. Using a 19 MM wrench or equivalent, remove the four M12 bolts that secure the float valve to the priming tank as shown in Figure 1.



Figure 1. Float Valve Removal



If float valve is stuck and cannot be removed, use a rubber mallet and gently strike edge of float valve to break loose.

3. Remove existing float valve and gasket from priming tank and discard. Both of these items will not be used again.

### Installation of new Float Valve and Gasket.

1. Place new gasket over float valve and insert into priming tank as shown in Figure 2. Make sure float valve has been inserted correctly into priming tank and is properly aligned.
2. Apply Blue Loctite™ 242 to all four M12 bolts. Hand-tighten all four bolts evenly.

3. Use a torque wrench and torque all bolts to 50 ft-lbf.



**Figure 2. New Float Valve and Gasket Installation**

## **VACUUM PUMP COVER PLATE REPLACEMENT INSTRUCTIONS**

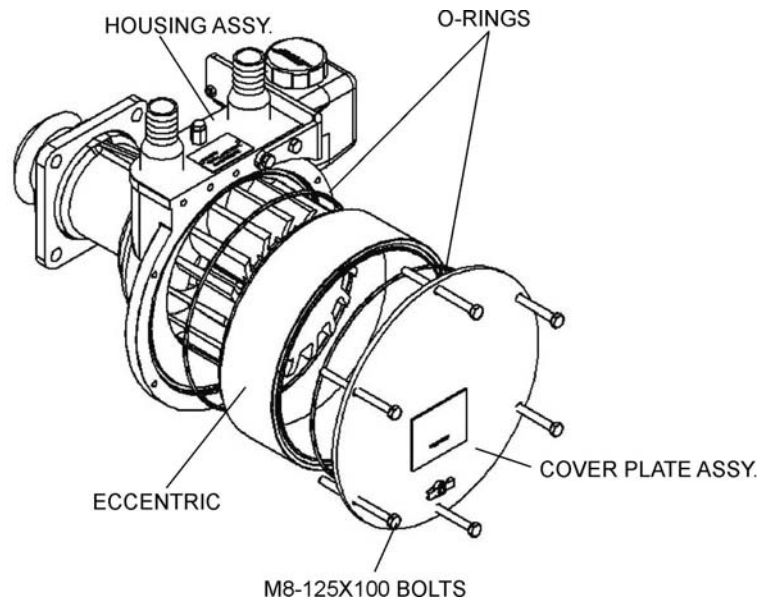
### **Removal of existing Vacuum Pump Cover Plate.**

1. Drain priming system and dispose of contents in accordance with applicable regulations.
2. Using a permanent marker make reference mark on housing and eccentric as shown in Figure 3.

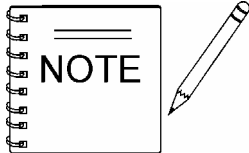


**Figure 3. Reference Mark**

- Using a 13 MM socket with ratchet, remove the M8-125X100 bolts (6) that secure the cover plate (Figure 4) to the vacuum pump housing.



**Figure 4. Cover Plate Removal**



When removing cover plate, vacuum pump may contain residual fluid that will be released. Have a container ready to catch this excess fluid

- If eccentric is loose, remove o-rings on both sides of eccentric. If eccentric is stationary (does not move) **DO NOT** remove o-rings.

## Installation of new Vacuum Pump Cover Plate.

1. Install new o-rings if removed in previous section (step 4). If o-rings have not been removed proceed to step 3.
2. Lube or grease o-rings before installing. Install o-rings behind and in front of eccentric.
3. Apply Loctite™ 242 Blue to all bolts (6).
4. Place new cover plate onto Housing Assembly, insert bolts and hand-tighten. Using a torque wrench, torque all bolts (6) in a star pattern to 14 ft-lbf.

## DECAL UPGRADE

### New Decal Placement

1. Install new decals as shown in Figure 5. Make sure pump surface is free of dirt, oil and debris before placing decals on pump.

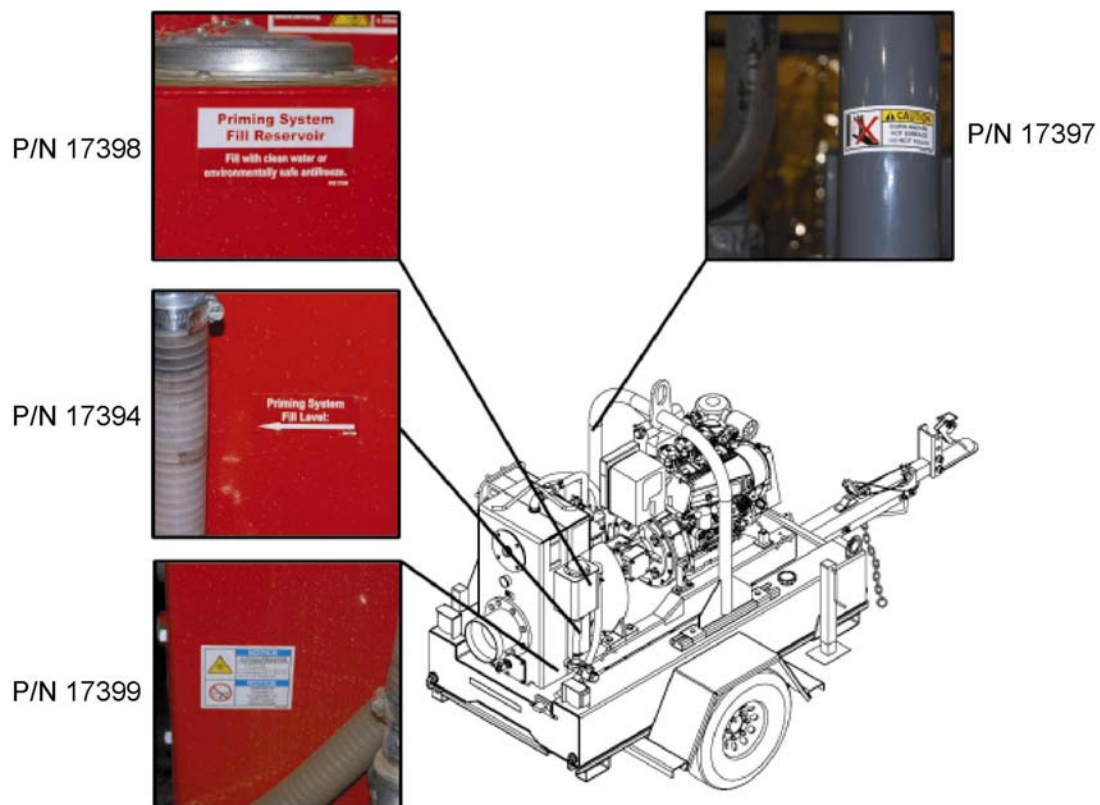


Figure 5. Decal Placement

## **WARRANTY INFORMATION**

**Campaign: Reference No. 20080307**

Multiquip will reimburse up to 1 hour of labor per machine for this repair.

Contact the Multiquip warranty department for claim number and warranty form.

**Multiquip Warranty Department**

800-421-1244

Chris Fairchild – Extension 279

Connie Ferrer – Extension 289

Wendy Sanchez - Extension 322